

R28i Mounting instructions

Verify the following items were received:

R28i encoder

Additional Items needed to complete installation:

Mounting Screws – 2 each (Purchased separately)

Setscrew wrench (Purchased separately)

Cable Assembly (Purchased separately)

Mounting screw wrench

**CAUTION: Do not push cover down or pull it off prior to installation!
The encoder is shipped with cover in the installation position.**

M9 Encoder Mounting

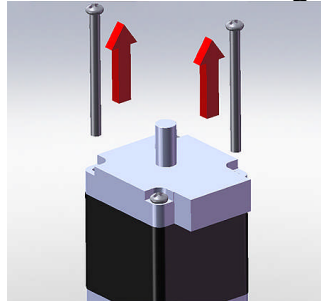


Figure 1A

(For M9 only)
Remove the 2 motor
mounting screws as
shown in Figure 1A.

M11 Encoder Mounting

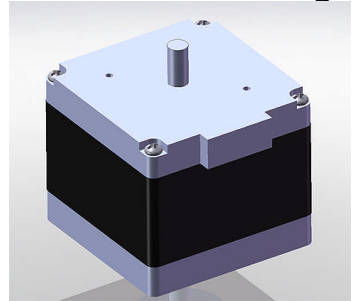


Figure 1B

Step 1:

M9 Encoder Mounting

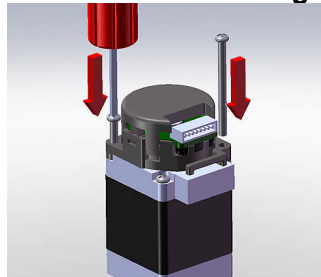


Figure 2A

Verify the cover is in the
installation position
(~3mm gap between
housing & cover). Slide
the encoder onto motor
with the connectors
oriented. Install
mounting screws and
torque to 40 oz-in.

M11 Encoder Mounting

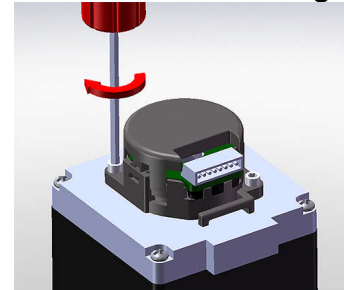



Figure 2B

Step 2:

This document is the property of RENCO Encoders and is submitted in confidence. Disclosure, reproduction or publication without written authorization is prohibited.

542543

Change: update CAUTION statement

	Release-no.		Created	Responsible	Released	Version	Rev.	Sheet	Page
			Powell			D658019 - 00 - D - 01			1/
			03/06/2009			Document no.			2

Step 3:

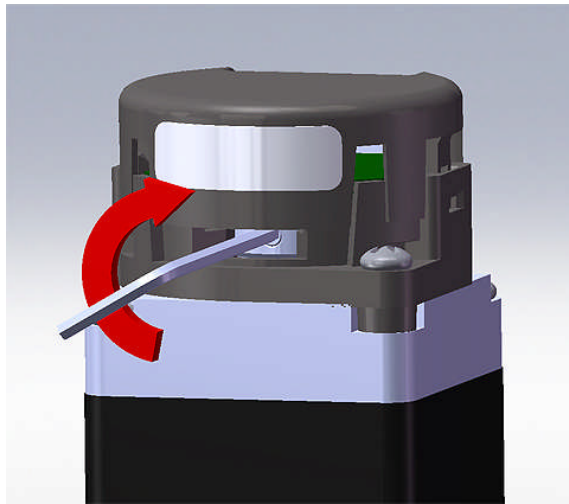


Figure 3

Torque the set screw to 20 oz-in. The set screw is located between the cover and base opposite the connector.

Step 4:

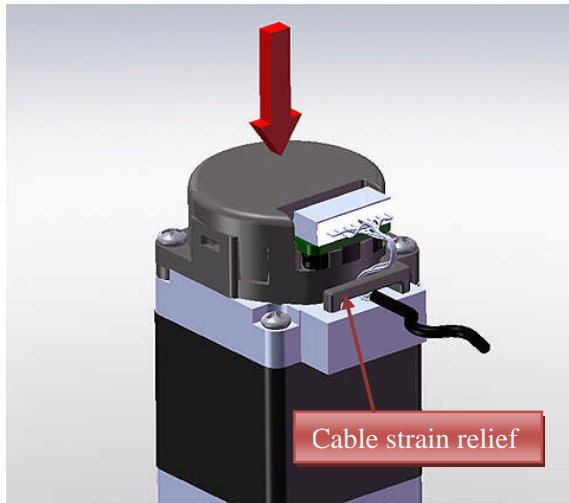



Figure 4

Push downward on cover to snap it into operating position. Install cable assembly and route it underneath the cable strain relief.

	Release-no.		Created	Responsible	Released		Version	Rev.	Sheet	Page
	Name		Powell			D658019	- 00 - D - 01			2/
	Date		03/06/2009				Document no.			2